

# MULTIPANEL Waterproof Plinth Board

Installation  
guide



## Product information

PLINTH SIZE (MM)	THICKNESS	WEIGHT (KG)
2400 × 1200 × 200	30mm	3Kg
2400 × 1200 × 170	30mm	3Kg

The plinth boards are end matched with a tongue and groove for installation convenience.

### Application

MULTIPANEL manufactures a revolutionary 100% waterproof plinth board, ideal for burying into the dirt as a moisture barrier between the ground and the lightweight cladding.

This guide will outline the detailing of the plinth board to achieve a 100% waterproof substrate. 30mm MULTIPANEL can be installed direct to 450mm studs or alternatively it can be directly fixed to an existing solid substrate.

### Adhesion

MULTIPANEL recommends polyurethane adhesive, in conjunction with mechanical fixing, when gluing panels to substrates. The MULTIPANEL PU is recommended and is the preferred method for adhering to framework. For alternate adhesives refer to manufacturers specifications.

### A and B surfaces of MULTIPANEL

During the manufacturing process some air pockets may form. These air bubbles are small in size and appear on the "B" side of the panel only. Every panel produced is stamped to advise the "B" side. Holes will not compromise the integrity or waterproofing of the system.

### Cutting

Standard woodworking tools can be used for all cutting of MULTIPANEL.

### Storage and handling

MULTIPANEL should always be stored flat, on a level surface, and away from direct sunlight. UV light will cause discoloration of MULTIPANEL however will not change the structural integrity.

### Safety

MULTIPANEL is an inert, non-toxic, non-carcinogenic material and is not considered harmful, however inhalation of dust produced during cutting should be avoided.

Eye, ear and mouth protection should be worn whenever cutting or sanding MULTIPANEL. Gloves are recommended when applying MULTIPANEL adhesive.

Uncured adhesive may be removed from tools and timber and tiles with alcohol cleaner such as Methylated spirits. Cured adhesive must be removed mechanically.

## What is MULTIPANEL?

MULTIPANEL manufactures a revolutionary, high-density, polyurethane composite building panel, ideal for waterproofing balconies as it is lightweight, 100% waterproof, highly versatile and replaces the need for a liquid membrane.

This innovative product is currently the most technologically advanced construction panel on the global market. It is a significantly superior alternate to traditional building materials.

### Product advantages

/ Lightweight



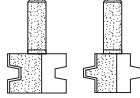
/ 100% waterproof

/ Eco-Friendly







/ Labour Saving

/ Insulating

### Accessories/components supplied by MULTIPANEL

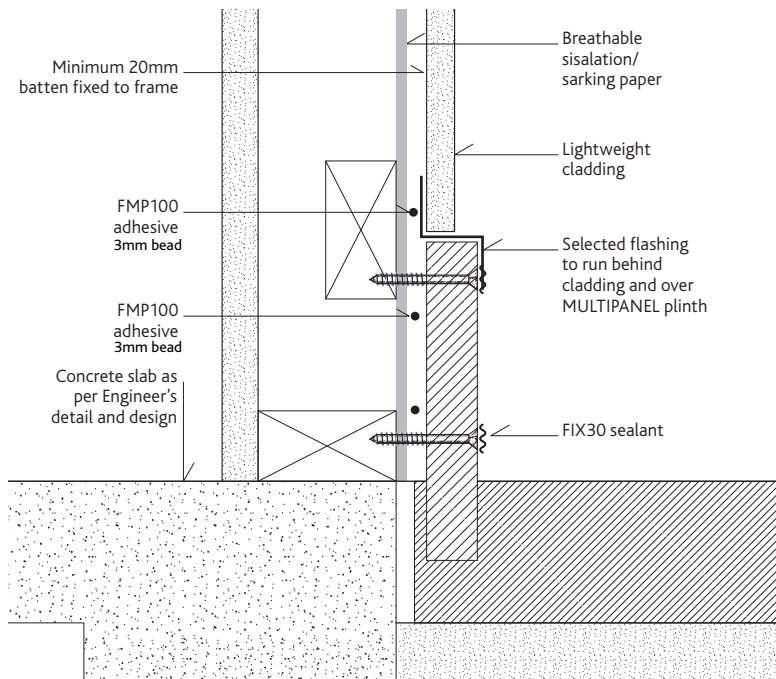
COMPONENT	DESCRIPTION
 Foaming PU adhesive	FMP100 – PU foaming adhesive. 310mL Colour: Opaque
 PU adhesive	FIX30 – PU sealant adhesive. 600mL Colour: Brown
 T&G router bit	For creating tongue and groove joint detail

### Accessories/components not supplied by MULTIPANEL

 Screws	For fixing into steel frame. Minimum 50mm screw
 Screws	For fixing into timber frame 2.8 × 50mm min class 3 fixing. Refer to manufacturers or suitability
 Flashing screws	10–16 × 16mm Self-Drilling screw, Wafer, Class 3
 Nails	Nails – min class 3 2.8 × 50mm
 Blade	For spreading adhesive over all sheet joints and fixings
 Gloves	Recommended when using adhesive

# MULTIPANEL Waterproof Plinth Board

DETAIL – ENSURE SLAB IS PER ENGINEERS DETAIL



NOTE — Ensure substrate is flat and straight

## STEP 1

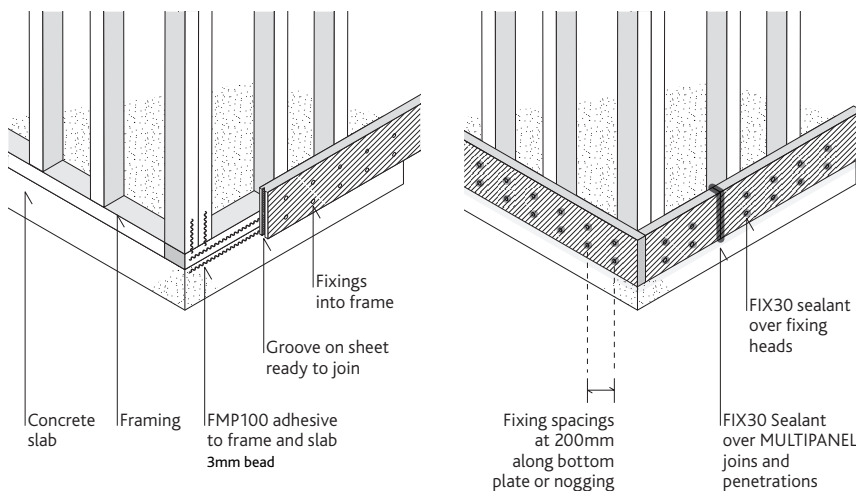
Apply a continuous bead of FMP100 adhesive to the frame and or solid substrate 3mm bead

## STEP 2

Screw or nail off using a minimum 50mm fixing, 20mm from plinth edge and at 200mm across the top and bottom of the board.

## STEP 3

Apply FIX30 sealant over any penetrations



# Warranty and conditions

The company warrants the MULTIPANEL Waterproof Plinth ("the product") for period of (10) years ("the warranty period") from the date of purchase, that it will be free from defects due to faulty manufacturing, and will be resistant to cracking, rotting, water, fire, and damage to the extent set out in the relevant MULTIPANEL published literature, and subject to compliance to the conditions set out below.

## Conditions of warranty

The warranty is strictly subject to the following conditions (which are in addition to and do not displace the MULTIPANEL Terms and Conditions of Sale).

- a. The product and any other components of the system must be installed in accordance with the relevant MULTIPANEL literature current at the time of installation. Further to all other products including jointing and sealing systems, that are applied or used in conjunction with the product must be installed as per the relevant manufacturer's specifications at the time of installation.
- b. MULTIPANEL will not be liable for, and will not accept any breach of Warranty claims, unless the claimant provides proof of purchase within 30 days of the alleged defect becoming apparent.
- c. Under no circumstances is the Warranty transferable.
- d. MULTIPANEL will not be liable for defects arising from materials and components not supplied by MULTIPANEL, or the use of goods by a person in a manner not consistent with the recommendations made by MULTIPANEL.
- e. A claimant's sole remedy for breach of Warranty is (at the company's option) that MULTIPANEL will repair or replace the defect, pay the cost of replacement or rectification of the affected product, or supply replacement product.
- f. Under no circumstances will MULTIPANEL be liable for any damages or losses to property damage and personal injury, economic loss or loss of profits, arising from contract or negligence or howsoever arising. Without limiting the foregoing, MULTIPANEL will not be liable for any claims, damages or defects arising or in any way attributable to poor or defective workmanship, poor design and detailing, defective materials, structural movement and/or movement of materials to which the product is attached to, acts of God including but not limiting to severe weather conditions or unusual climate conditions, normal wear and tear, or growth of any organism on the product.

## Disclaimer

The recommendations in this literature are based on good building practice, but is not an exhaustive statement of all relevant information as the successful performance of the system depends on several factors outside the control of MULTIPANEL, for example the quality of workmanship and design.

**MULTIPANEL**



MULTIPANEL Pty Ltd  
 Level One 110 Mt Eliza Way  
 Mt Eliza Victoria Australia 3930  
 Phone +61 3 9787 2544  
 Fax +61 3 9787 9582  
 Email info@multipanel.com.au  
 www.multipanel.com.au